

How to embed fonts and produce output in Letter size?

Bipin C. Desai

How to embed fonts: Unix/Linux

To make sure fonts are embedded run the command *updmap* as follows:

```
updmap --edit
```

the configuration file *updmap.cfg* will open in your default text editor.

Make sure the *pdftexDownloadBase14* line is set to true; if not set it true as follows:

```
pdftexDownloadBase14 true
```

Save the file. Regenerate the pdf file and check with the unix command: *pdffonts*.

To check whether fonts are embedded: Unix/Linux

Use the command program *pdffonts* and check that all fonts are Type1, and that all fonts have a "yes" in the "emb" (embedded) and "sub" (sub-set) columns.

Page size on Unix/Linux using LaTeX:

Many LaTeX to PDF converters, such as *pdflatex* tend to have the default set to produce A4 size page format regardless of any parameter specifications in your LaTeX file. The most reliable method to produce letter size output is to use simply LaTeX followed by the command *dvips* to produce a postscript (.ps) file as given below:

```
dvips filename.dvi -t letter -Pwww
```

Another method is to add the following two parameters after the document class as shown in the following:

```
\pdfpagewidth 8.5in
```

```
\pdfpageheight 11.0in
```

Example:

```
\documentclass[lettersize, 12pt]{article}
```

```
\pdfpagewidth 8.5in
```

```
\pdfpageheight 11.0in
```

```
\thispagestyle{empty}
```

```
\begin{document}
```

```
etc.....
```

```
\end{document}
```

If you're using a LaTeX distribution in North America, where the letter size is the default output, so everything you produce should be in letter paper, run the following *texconfig* command.

texconfig paper letter

Window 7 & Word 10 – Assuming Acrobat Pro is also installed¹

Prepare the document as per the requirements of the event.

Choose File>Printer>Adobe PDF

Click on “Printer Property” (Figure 1) and unclick the box corresponding to: “Rely on system fonts only. Do not use Document fonts”.

Click on the Edit button next to the Default Setting line. Click on the General Tab in the left column.

Make sure that the Default Paper size is 8.5 in by 11.0 in

¹ CutePDF is a PDF generator which is available for free for personal use.

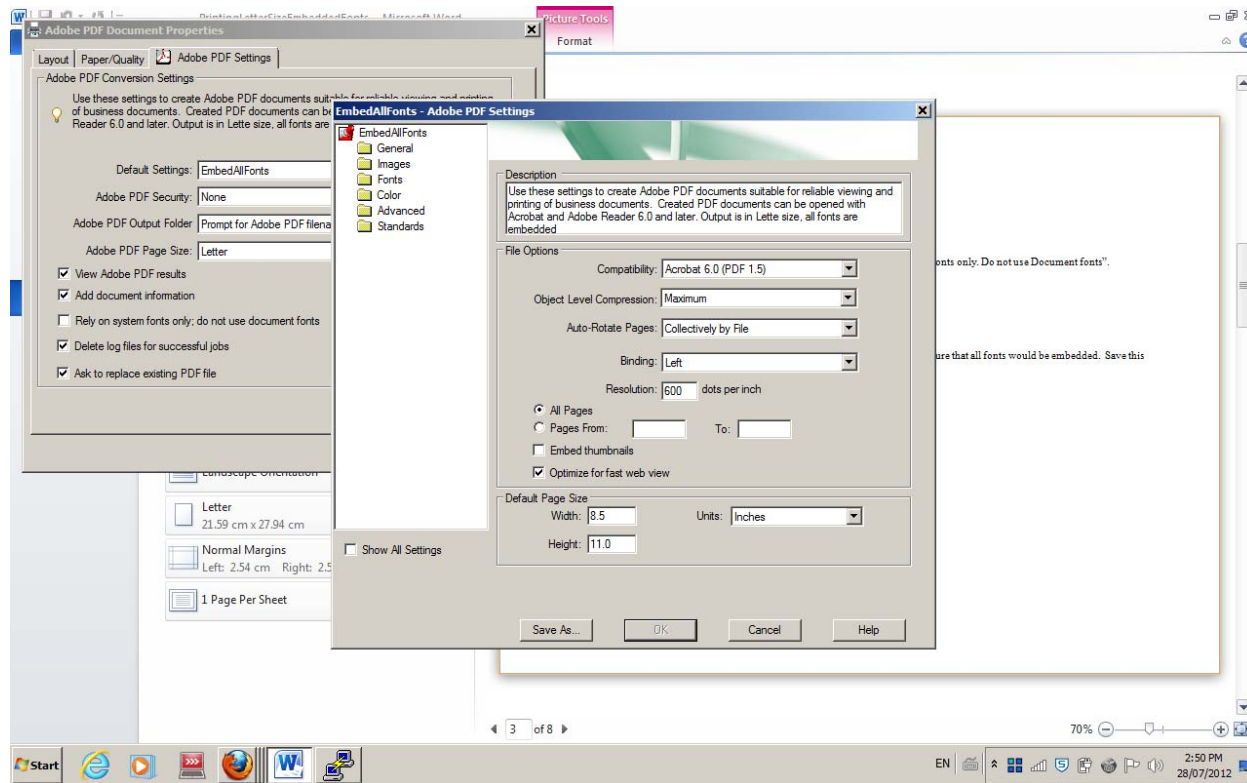


Figure 1

Click on the Fonts setting. Click on the first font line under “Never Embed” box; keeping the shift key down, scroll down to the last font in this box: all these fonts would be highlighted. Now press the ADD button to move these fonts to fonts source box.

Click on the first font in the “Fonts Source” box; pressing the shift key, move down to the last font . Press the ADD button next to ‘Always Embed’ box. . All fonts now listed as always to be embedded.

Make sure to check the boxes Embed All Fonts and for Sub setting the fonts

Save this as EmbedAllFonts setting. (Figure 2)

Make sure use to use the above “EmbedAllFonts” setting when producing a document where you need to embed all fonts(Figure 3).

Press Print and send the output to file giving it a filename as specified by the event organizers e.g., Desai1.pdf

Using the above setting for Word, and printing using Acrobat we get a file which has the subset of the fonts used embedded as shown by the following:

name	type	emb	sub
-----	-----	---	---
NDNFJH+TimesNewRoman	TrueType	yes	yes
NDNHAA+Calibri	TrueType	yes	yes
NDNHFA+TimesNewRoman,Bold	TrueType	yes	yes

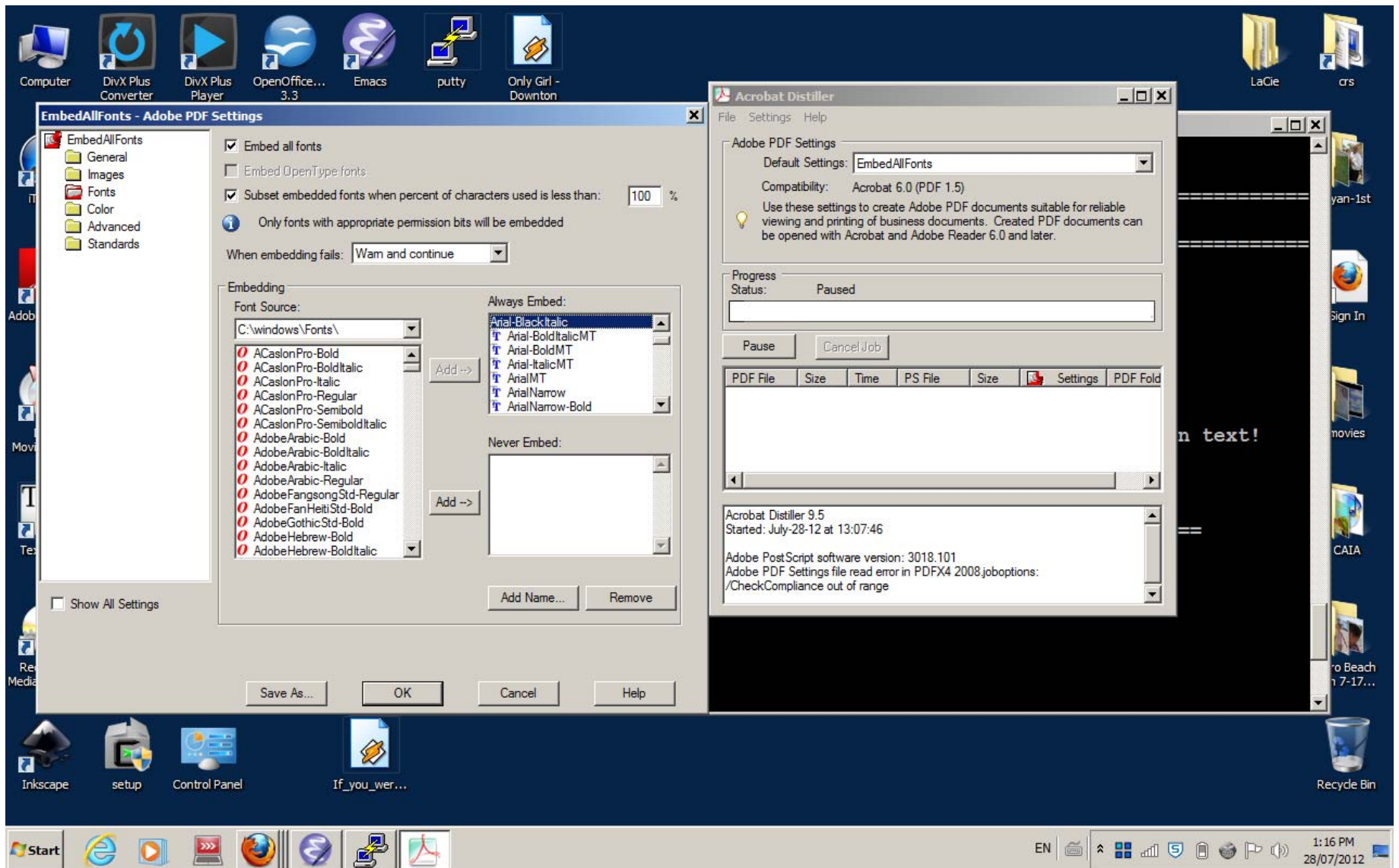


Figure 2

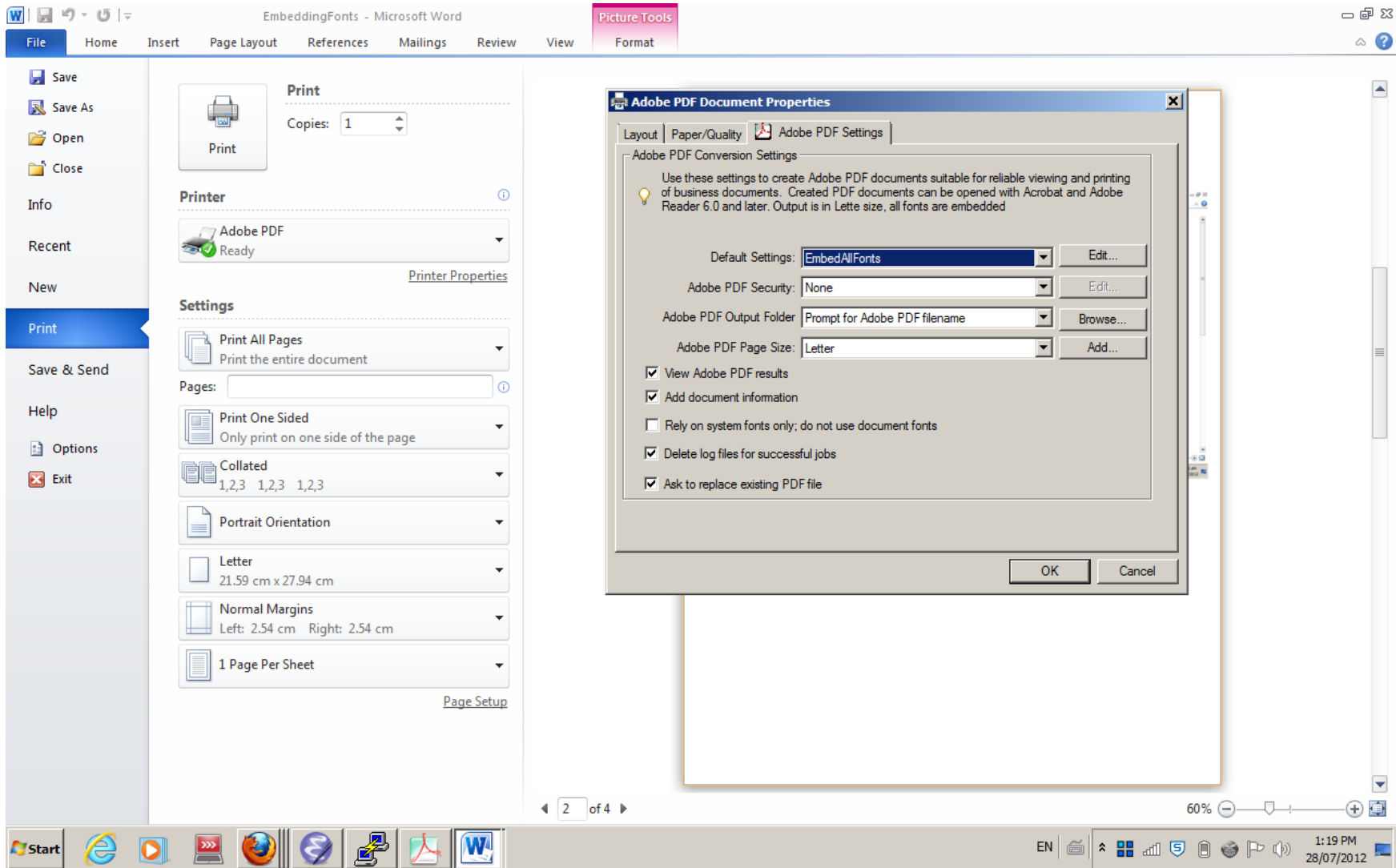


Figure 3

Open Office On Windows.

I believe OpenOffice has the PDF converter built in. Create the document using the specification for the event. Export it as PDF. Making sure to check the

Embed Standard Fonts box as shown below.

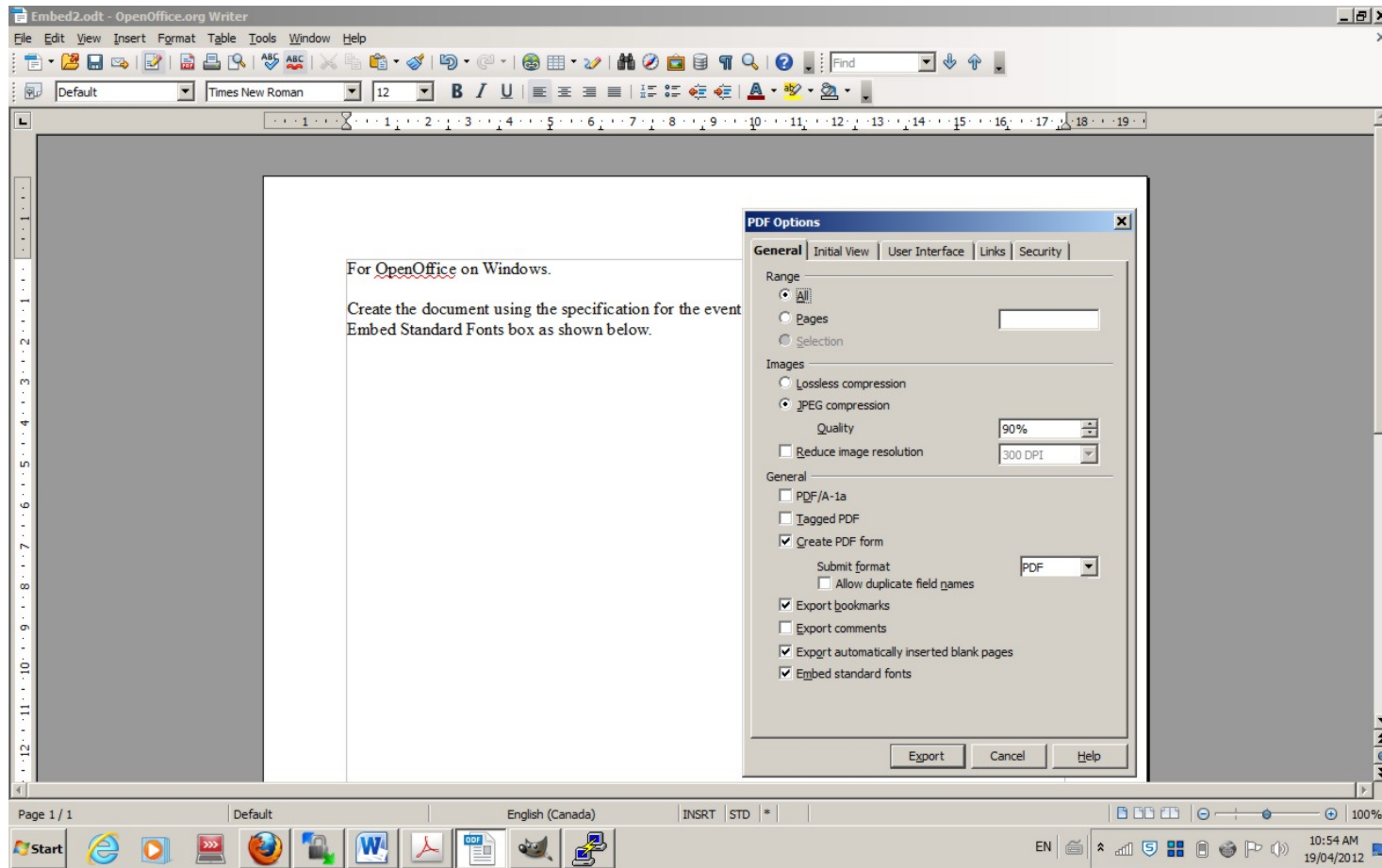


Figure 4

Mac!

What is that?